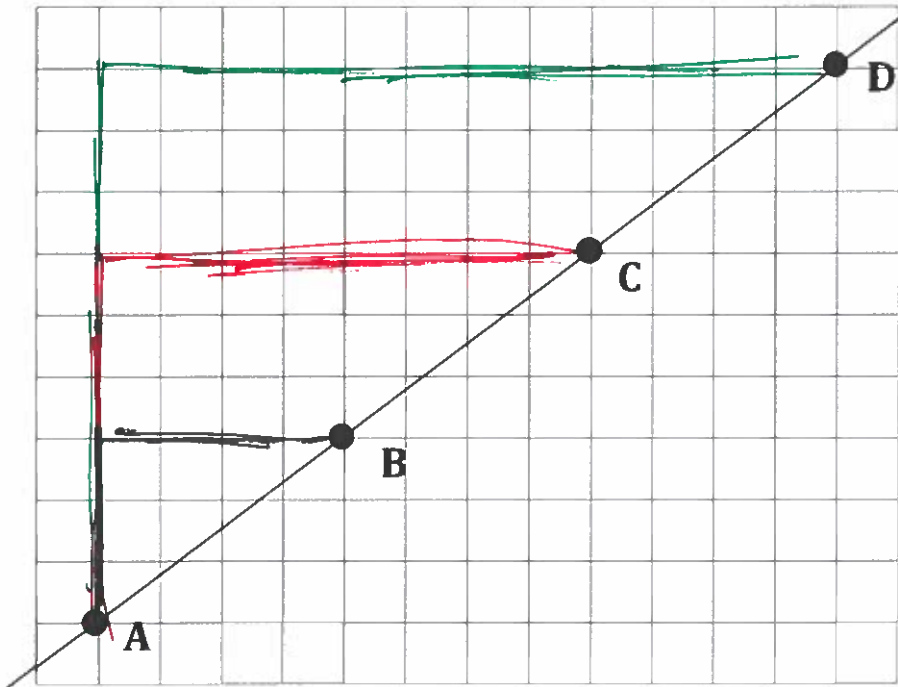


10.2: Similar Triangles on the Same Line

NAME _____

DATE _____

PERIOD _____



$$\text{Slope} = \frac{3}{4}$$

Complete the table.

Make a triangle from...	length of vertical side	length of horizontal side	(vertical side) ÷ (horizontal side)
A to B	3	4	$\frac{3}{4}$
A to C	6	8	$\frac{6}{8} \rightarrow \frac{3}{4}$
A to D	9	12	$\frac{9}{12} \rightarrow \frac{3}{4}$